



# MARVELL MIST HOME AUTOMATION

---

DATE 01/03/2019







Control your home from anywhere in the world through a single secured tunnel connected to your home



## Product Lines – Software

Product suite is a mix of MarvellMist products & the products imported from other vendors.



### Home Gateway

Home gateway connecting to all the sensors, devices and cameras present at home. Does the initial processing and local automation & control and passes the processed data to cloud



### AWS Hosted Smart Home Cloud

All data being processed in cloud for long term trending, analytics and machine learning. Also the remote users control their home through this cloud.



### End User Interfaces

Remotes, Mobile App, Voice Assistants & Smart AI Mirror – comes in multiple form.

## Product Lines – Hardware

Product suite is a mix of MarvellMist products & the products imported from other vendors.

### Sensors



Door, Smoke, Water, Motion, Temperature, CO, CO2, Gas



### Surveillance Camera

Indoor & Outdoor 1080p wireless IP cameras with cloud recording



### Smart Appliances

All appliances at home, controlled by electric switch & plug points – can be digitally controlled



### SOS

SOS during emergency and also direct calls video calls from camera or MM



### Video Door Bell

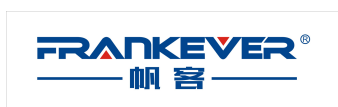
Talk to some body pressing bell at your door before opening or when you are not at home



### Remote Door Lock

Convert your locks to digital locks that can be unlocked from any where

## SOLUTION ECHO SYSTEM



# SMART HOME CONTROL FOR ALL AGE GROUPS



Smart Mirror Dashboard



Mobile APP



Your Google Assistant,  
always ready to help.



Voice Assistant



Remote & Traditional  
Switching for old age







All appliances can be remote controlled by only one smart phone

Support 5,000+ models of home appliances, TV, Set-Top Box, Air-conditioning, Loudspeaker Box, Motor Curtain...  
No matter IR remote, or RF remote, only one smart phone can control everything



## Universal WIFI/RF/IR Remote Controller with wall mounting kit and 2 Pin USB adapter

- Support all IR controlled devices such as TV, Air condition, Set Top Box etc.
- RF Operating frequency is 433MHz and 315MHz. Support WIFI 2.4GHz b/g/n.
- Controls any RF device operating in 433/315 MHz frequency with 50-70 meters range.



**Device name:** Fob Key Remote  
**Power input:** 3V battery (1 x CR2032) (NOT INCLUDED)  
**RF frequency:** 433.92MHz  
**Operating humidity:**  $\leq 85\%$   
**Operating temperature:**  $0^{\circ}\text{C} - 50^{\circ}\text{C}$   
**Operating consumption:**  $\leq 15\text{mA}$   
**Standby consumption:**  $\leq 1\mu\text{A}$   
**RF range:** 30m (line-of-sight)  
**Device dimensions:** 58\*31\*10mm  
**Indication:** Hold and button for 1s, the LED indicator flashes

**Device name:** HUB  
**Max. connections:** 16 sensors  
**Material:** Environmentally friendly ABS  
**Power input:** DC 5V/1A Micro USB  
**Operating temperature:**  $0^{\circ}\text{C} - 50^{\circ}\text{C}$   
**Operating humidity:**  $\leq 85\%\text{RH}$   
**Standby consumption:**  $< 1\text{W}$   
**Wi-Fi standard:** 2.4GHz 802.11b/g/n  
**RF sensitivity:** -110dB  
**RF frequency:** 433.92MHz  
**Device dimensions:** 100\*100\*28mm



**Device name:** Motion sensor  
**Power input:** 3V battery (2 x AAA)  
**Detection range:**  $\leq 12\text{m}@25^{\circ}\text{C}$  (typical)  
**Operating humidity:**  $\leq 85\%$   
**Operating temperature:**  $0^{\circ}\text{C} - 50^{\circ}\text{C}$   
**Operating consumption:**  $\leq 15\text{mA}$   
**Standby consumption:**  $\leq 15\mu\text{A}$   
**RF range:** 30m (line-of-sight)  
**Effective angle:**  $90^{\circ}$   
**RF frequency:** 433.92MHz  
**Installation height:** 2.2 - 2.7m  
**Device dimensions:** 50\*77\*19mm



**Device name:** Door sensor  
**Power input:** 3V battery (2 x AAA) (NO INCLUDED)  
**Auto-report:** Synchronize with hub every 60 mins with status  
**Operating humidity:**  $\leq 85\%$   
**Operating temperature:**  $0^{\circ}\text{C} - 50^{\circ}\text{C}$   
**Operating consumption:**  $\leq 15\text{mA}$   
**Standby consumption:**  $\leq 9\mu\text{A}$   
**RF range:** 30m (line-of-sight)  
**Supported alerts:** Burglary, tampering, low battery  
**RF frequency:** 433.92MHz  
**Device dimensions:** 50\*77\*19mm

## Built-in Multiple Sensors



### Find Problem ▶



### Trigger Actions ▶

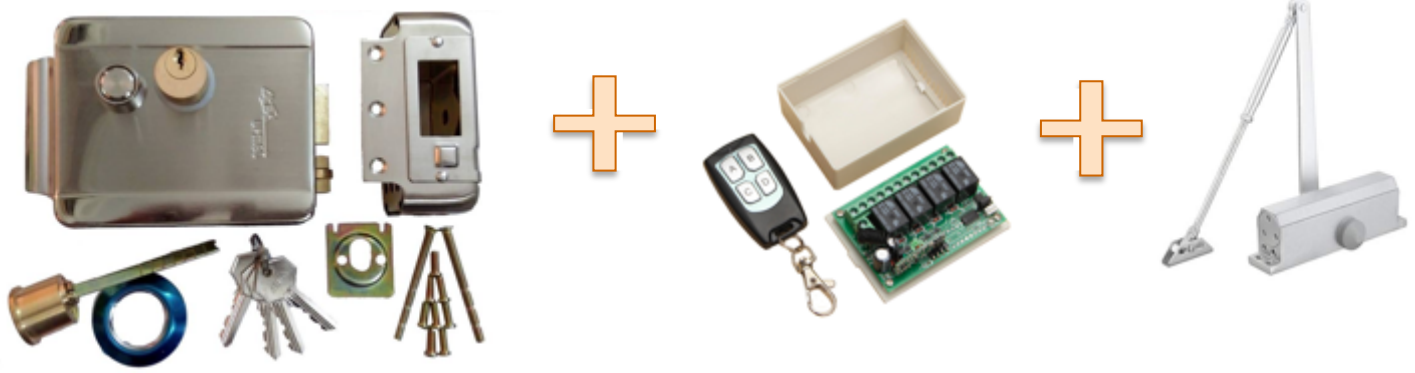
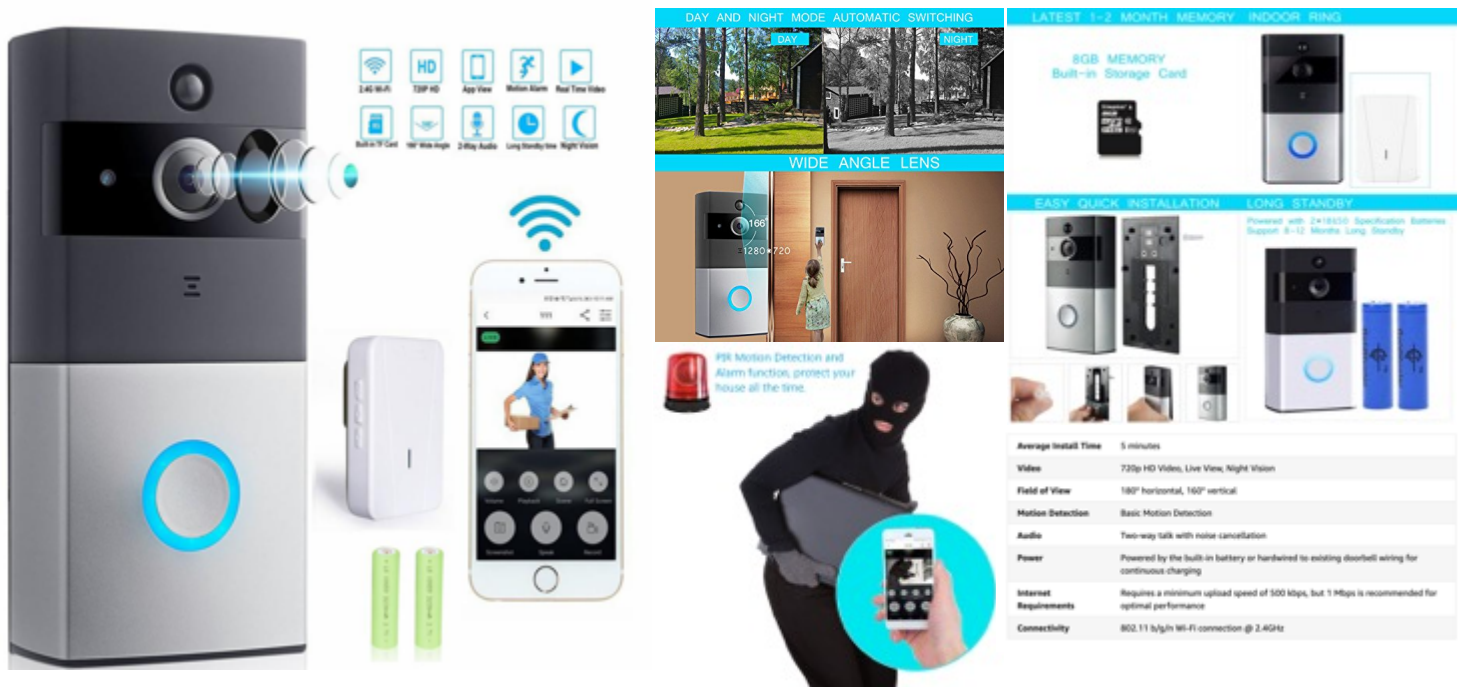


### Improve Environment



## Environmental Sensor

- Can detect the environment indexes, including VOC, voice, light, humidity, temperature, noise etc.
- Adding other detectors: Other elements of detection will be added in the future through external plug-in.
- Controls your device on your smartphone when you are away from home, protect your family's health
- Compact size and elegant design, a modern decoration in your home.



## Video Door Bell + Smart Lock

- Video doorbell allows to talk while seeing the person in front of the door from any remote location.
- Any unwanted motion is detected and notified with photos captured.
- 720P video clarity with 165 degree viewing angle and supports night vision as well.
- Local and cloud storage of clips and videos.
- Electronic lock controlled through RF controller allows to unlock the door from any part of the world, for your friends, relatives or to receive a parcel from the courier person.
- Door locks automatically by the auto lock hinge.
- Lock comes with physical keys as well – that helps during emergency or elderly people.
- So the electronic lock can be opened either through the KEY or REMOTE or Mobile APP or Voice command using Google Voice Assistant or ALEXA.



## HD Wifi Camera

The smart ,simple way to secure your home.



720P



## Indoor Surveillance Camera



## Outdoor Surveillance Camera



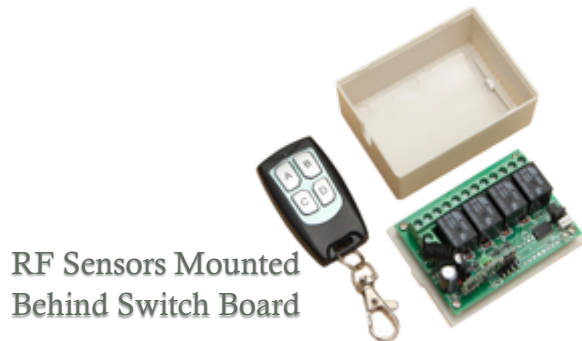
## Indoor & Outdoor Surveillance Camera

- All models are WIFI IP Camera, requires power cable to stay ON.
- Models include 720p to 1080p clarity and some are static and some are 360 degree rotatable.
- Some indoor cameras support 2 way talking.
- Cameras have inbuilt motion sensors that detects motion and records if enabled.
- Internal camera storage up to 128GB.
- For more recording storage the network recorder can be used which can take any capacity internal hard drive up to 4 to 6TBs.
- Cloud storage is also an option if user does not want to store locally and get it stored in cloud, so that all history of recorded clip is accessible anytime from anywhere from the mobile app.



# ELECTRICAL APPLIANCES CONTROL

- MM Shield RF control goes behind the switch board along with the power supply driver and a parallel connection is made for the points that user want to control remotely from app or voice.
- Now the existing switch board continues to work as a toggle and still be used for switching on/off
- Maids, Guests or older people at home who are not comfortable with voice or app can continue to use the switch board or remote to control the appliances.
- Appliances can be anything starting from bulb, fan to washing machine and Freeze.



- For high voltage appliances like AC or Geyser WIFI socket is also an option that offers same features including power consumption.
- Appliances can be scheduled to start at a particular time as well.
- In case of a power failure the physical switch state will be retained when power comes back.
- Sensor based lights for bathrooms and corridors which turns on only when there is motion detected
- Wi-Fi Switch is another option meant for new houses or customers looking for board replacement

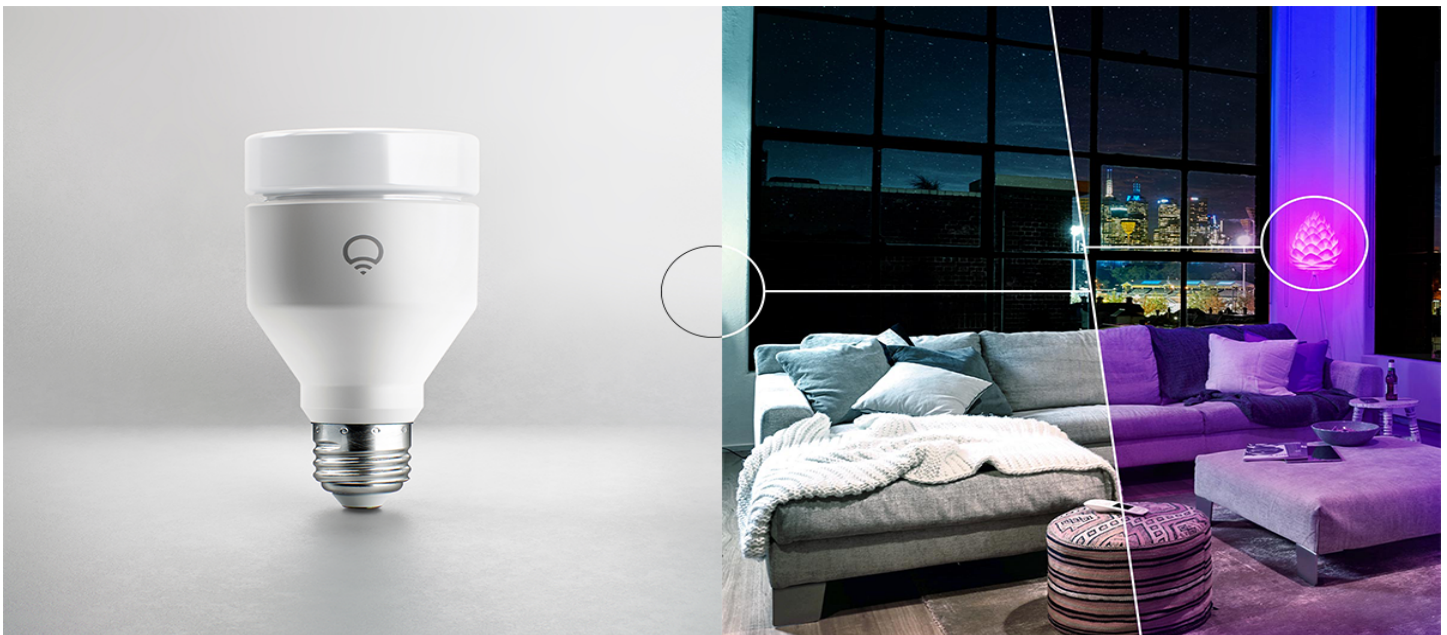
WIFI Socket



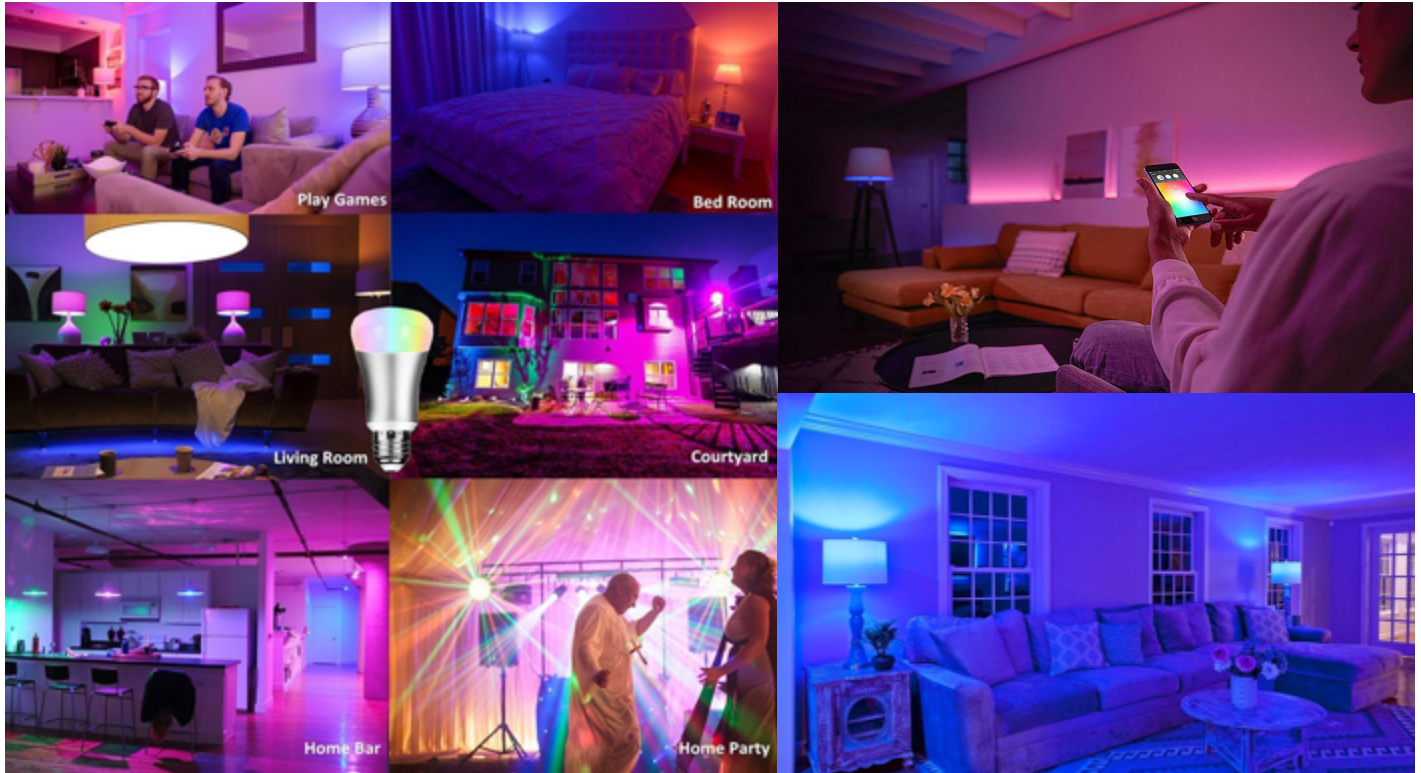
Motion sensor Bulb



WIFI Touch Switch



# LIGHTING BASED ON MODD

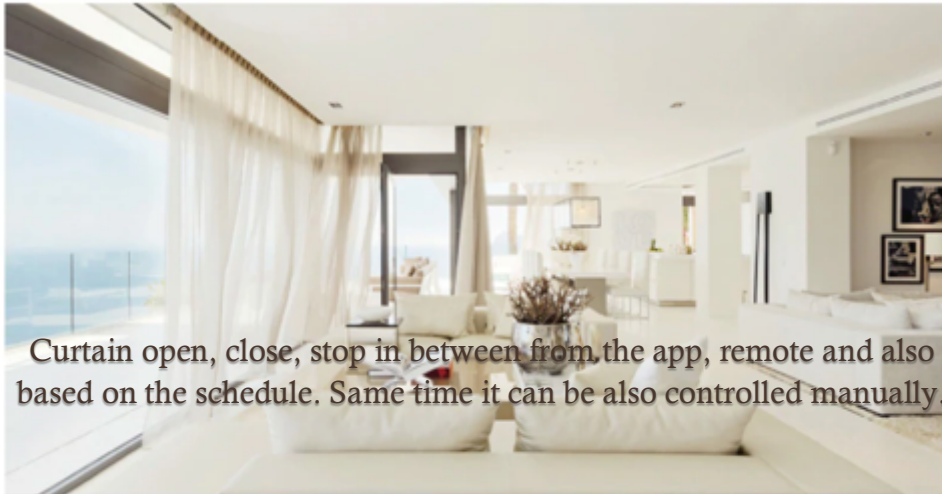


## Scenes Timers & Rules

- **Scenes** are triggers that is a combination of multiple events put together in a sequence. *Leave Home scene may switch off few lights, brings all the security sensors and cameras to armed mode and ensures all appliances are either switched off or in sleep mode.*
- **Timers** are nothing but schedules that is configured to start automatically at certain point of time. *Morning 7 AM should trigger Alexa to start a voice alarm followed by your favorite song, geysers switched on, oven and juice makers start to prepare your breakfast and water sprinkler starts to water your garden.*
- **Rules** are If This Then That (IFTTT) which triggers a sequence of events based on occurrence of a particular event. *If there is a motion sensor detected between 12PM & 5AM in the night from the external camera, switch on the outside flood lights, start music in the hall, switch on hall light & start recording the video feed.*



# BRINGING COMPLETENESS TO SMART HOME AUTOMATION



Curtain open, close, stop in between from the app, remote and also based on the schedule. Same time it can be also controlled manually.

## Electronic Motorized Curtain



## Voice & App based Media Control

Complete media control including the channels, online media etc from the app, remote and voice assistants. Automatic change of room lighting, temperature & humidity based on mood & scenes

## App Controlled or Scheduled Water Sprinkler



Gates can open and close based on owners arrival through app or remote

  
**AUTOMATIC**  
Gates & Doors



**MARVELLMIST SYSTEMS PVT.**

# 203, 9<sup>TH</sup> CROSS, KPCL LAYOUT, KASAVANAHALLI MAIN  
ROAD, OFF: SARAJAPUR ROAD, BENGALURU, KARNATAKA,  
INDIA. PIN: 560035. PHONE: 9845306585

---